

Edina Public Schools
Annual Report on Curriculum, Instruction and Student Achievement
Summary of Districtwide Student, Parent, and Staff Opinion Surveys

Since 2000, the Edina Public Schools has conducted student, parent and staff opinion surveys each year. The surveys are designed to capture feelings and perspectives from students, staff, and parents regarding their educational experience with the Edina Public Schools. In spring 2006, all students in grades 1-12 were surveyed along with all building staff and all parents.

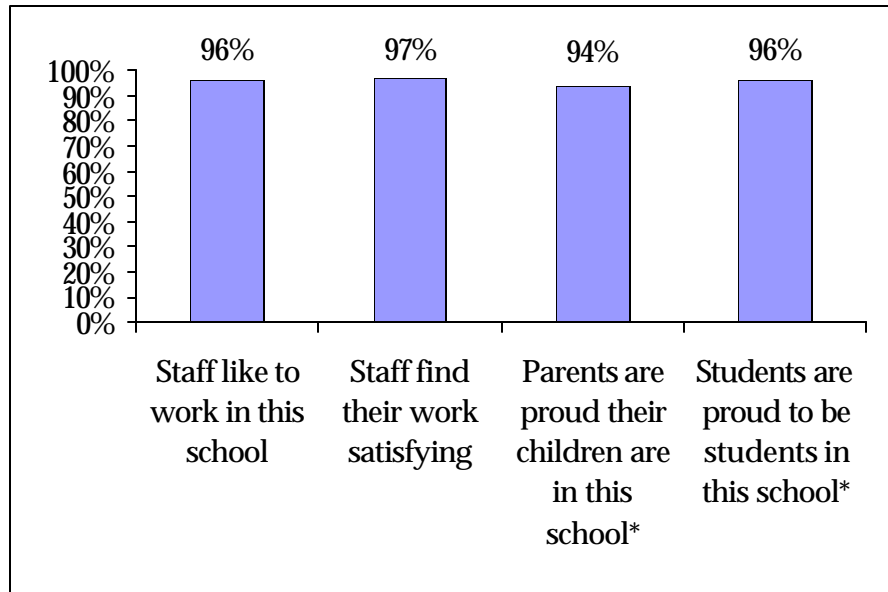
As in previous years, student surveys were conducted through the use of paper and pencil scan sheets that were completed during school time. For staff, the use of paper and pencil surveys was replaced by a computer-based survey. Staff were notified by e-mail that the survey was available for them to complete. They were provided a window of 2-3 weeks in which to respond. For parents the same procedures that had been used in 2003-2004 were employed once again. Parents of elementary students received a paper copy of the survey in their child's backpack and were asked to complete and return it to the district Research and Evaluation Office.¹ At grades 6-12 the survey was conducted on-line and parents were notified of their opportunity to complete the survey through the Edline system. They were provided with a window of about 3 weeks in which to respond.

The surveys are extensive. Only a selection of results is presented here. Across the different grades and responding groups there were some differences in question wording. The most predominant wording is reported here.

General Satisfaction

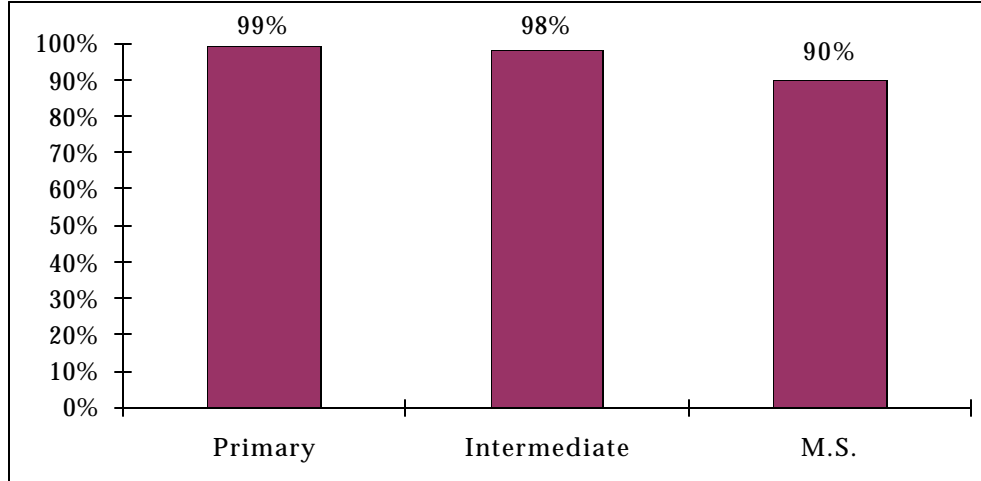
The figure on the next page presents data about student and parent pride in the school as well as data about staff satisfaction in their work. The results show extremely positive attitudes by the stakeholders toward their schools. The next figure reports percent of students at various levels who are proud of their schools. Again, these results indicate extremely positive student attitudes toward their schools.

Students, Staff and Parents Feel about Their Schools, 2006



* Asked only of students/parents at grades 1-9.

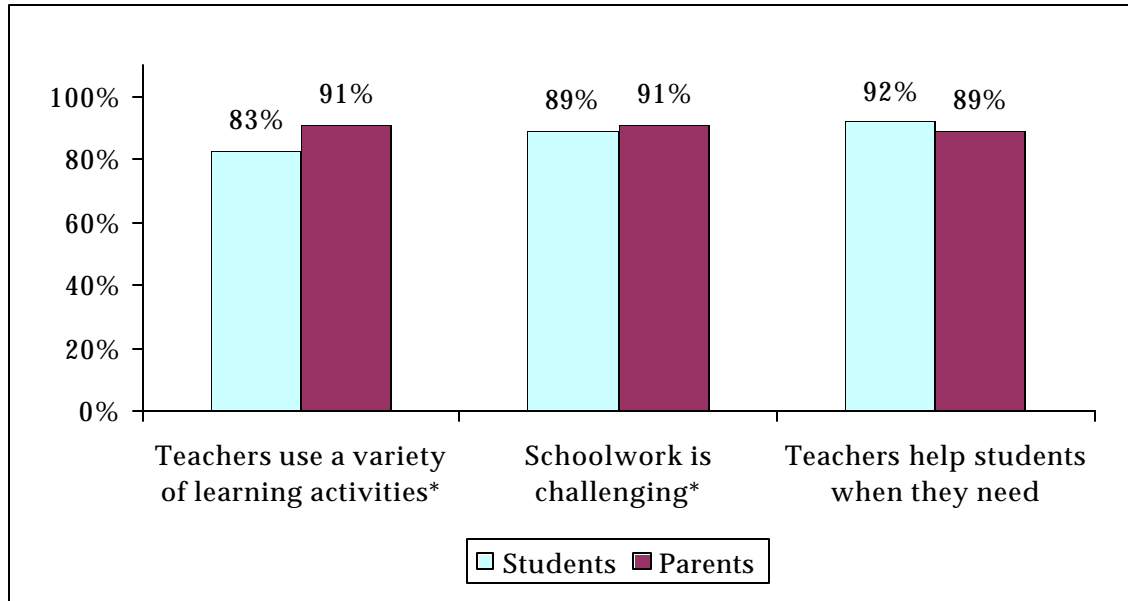
Percent of Students by Level Reporting They Are Proud to Be Students at Their Schools



Teaching and Learning

The figure on the next page shows a strong majority of parents and students rated teachers' help and their diverse teaching methods highly. Over ninety percent of parents and students feel that teachers use a variety of learning activities to help them achieve and that schoolwork is challenging.

Percent of Students and Parents Reporting about Student Learning



* Not asked of primary grades students.

Learning Climates

The next figure presents data about student school safety. The results indicate strongly positive feeling on the part of staff, students and parents that the Edina schools provide a safe learning environment.

Percent of Respondents Reporting That They/Their Child Feel(s) Safe at School

